

## What Is DaTscan?

---

DaTscan is an imaging drug that will be injected into the bloodstream to help your doctor assess a chemical in your brain called dopamine. A special device, called a gamma camera, will take pictures of your brain. These pictures and/or a report will be sent to your doctor, who can discuss the test results with you.

The DaTscan results may help determine if the symptoms you are experiencing are the result of a Parkinsonian syndrome. Parkinsonian syndromes occur when your brain is not getting enough of the dopamine it needs to perform certain functions. This affects the brain's ability to control movement and other muscle functions.

There are different types of Parkinsonian syndromes. The most common is Parkinson's disease, also known as PD. Other types include multiple system atrophy and progressive supranuclear palsy. DaTscan cannot distinguish between these different syndromes. However, DaTscan is the only FDA-approved imaging drug available that provides an image your doctor can view to help determine—in combination with an assessment of symptoms and possibly other tests—if you may be suffering from Parkinsonian syndromes or another condition with similar symptoms called essential tremor. The DaTscan test will be performed in the nuclear medicine department of a hospital or in an outpatient clinic.

**If you have any questions, please speak to your doctor.**

## Who Should Receive a DaTscan Test?

---

DaTscan shows visual evidence of a Parkinsonian syndrome in the brain. This can help decrease uncertainty around a diagnosis in adult patients who have signs or symptoms such as shaking or stiffness. DaTscan is available only with a prescription from your doctor, and only your doctor can decide if this test is right for you.

## Who Should NOT Receive a DaTscan Test?

---

### **This test is NOT for:**

- Patients with a known allergy or sensitivity to iodine
- Patients with a known sensitivity to DaTscan
- Children

### **This test may not be right for:**

- Patients who are pregnant
- Patients who are nursing
- Patients with reduced kidney or liver function

## What Are the Possible Side Effects of DaTscan?

---

Sensitivity reactions (such as rash or itching) have been reported after DaTscan administration. In clinical trials, the most common side effects were headache, nausea, dry mouth, or dizziness.

**DaTscan™**   
**Ioflupane I123 Injection**  
**See the Difference**

## How to Prepare for Your Test

**Be sure to follow your doctor's orders when preparing for this test.**

### Tell your doctor if you:

- Have any allergies or other medical conditions
- Are pregnant, nursing, or planning to become pregnant
- Have reduced kidney or liver function

### Tell your doctor if you are currently taking any of the following drugs:

- Drugs for the treatment of Attention Deficit Hyperactivity Disorder (ADHD) or Attention Deficit Disorder (ADD) (eg, Adderall XR®, Ritalin®)
- Antipsychotics
- Antidepressants (eg, Wellbutrin®, Zoloft®)
- Cocaine
- Weight-loss medications or appetite suppressants
- Smoking cessation medications

Your doctor will tell you whether you need to stop using these drugs for a short period of time before your DaTscan test.

### On the day of the test:

- Drink plenty of fluids and go to the bathroom frequently before your DaTscan test (and for two days afterwards)
- Wear loose, comfortable clothing because you will have to lie still for a period of time
- Bring a list of **all** the medications you are taking

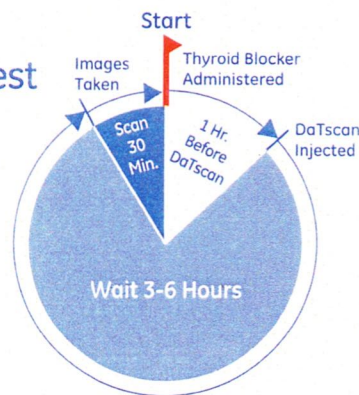
## What to Expect During the Test

The entire process takes several hours. The test will be performed by a specially trained healthcare professional; this may be a doctor, nurse, or technologist.

- At least one hour before the DaTscan dose, you will receive another drug to prevent the iodine in DaTscan from going into your thyroid, which may increase the risk of a type of thyroid cancer
- Before the test begins, DaTscan will be injected through an intravenous (IV) line in your arm. Because it takes time for the body to fully absorb DaTscan, you will need to wait three to six hours after this injection for the imaging test to begin
- For the imaging test, you will be asked to lie on a table and the healthcare professional will position you on a headrest. A strip of tape, or some other flexible restraint, may be placed across your forehead or chin to prevent your head from moving during the test
- A camera will be positioned above you. It will be very close to your head, but it should not touch you. You must try to remain as still as possible while the camera takes pictures (about 30 minutes)



## DaTscan Test



## DaTscan Results

The images of your brain, along with a written report, will be sent to your doctor. Your doctor will explain the test results and what they mean for your treatment options.

## Important Things to Remember

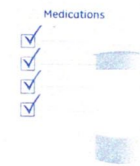
- Drink a lot of fluids and go to the bathroom frequently before your DaTscan test and for two days afterwards



- Wear loose, comfortable clothing



- Bring a list of **all** the medications you are currently taking



- Call your doctor if you have any questions or concerns about the DaTscan test



**If you have any questions, please speak to your doctor.**

**DaTscan™**  
Ioflupane I123 Injection  
See the Difference